

# MEMORY CARE AT GOLDEN LODGE

## LIFE ENRICHED

### COMFORT IN THE DETAILS

Our whole-person approach to memory care focuses on meeting residents' needs while creating an inviting family atmosphere. We offer three secured neighborhoods with a total of 36 studio apartments. The community is overseen by our experienced memory care director and staffed 24/7 with team members who are trained in dementia care. We're committed to making sure residents feel at home and have the freedom and confidence to learn and grow.



### MEMORY CARE NEIGHBORHOOD

Laid out in a safe and intimate neighborhood structure, each memory care studio apartment is designed as a comfortable home for those living with dementia. Each neighborhood features its own outdoor area with a courtyard to enjoy the beautiful Colorado sunshine; a large common area with quiet corners to relax; an open kitchen and personalized meals.



### AMENITIES AND SERVICES

- Staff on-site 24/7
- Individualized programs and activities focused on engagement and socialization
- Alarms on doors with video surveillance on entrances and public areas
- Secured interior and exterior walking areas
- Great rooms for social gatherings and family visits
- Three chef-designed meals per day, plus snacks in the neighborhood kitchen offered all day
- Weekly housekeeping and laundry services
- Medication management
- Incontinence services
- In-house therapies
- Beauty salon/barber shop
- Scheduled outings



720.605.2111



GoldenLodgeAssisted.com



1111 Newstar Way, Golden, CO 80403

# FLOOR PLANS & PRICE LIST

## BASE MONTHLY

**Studio** ..... starting at \$6,700\*/month

\*Rates are subject to change

## ALL INCLUSIVE CARE

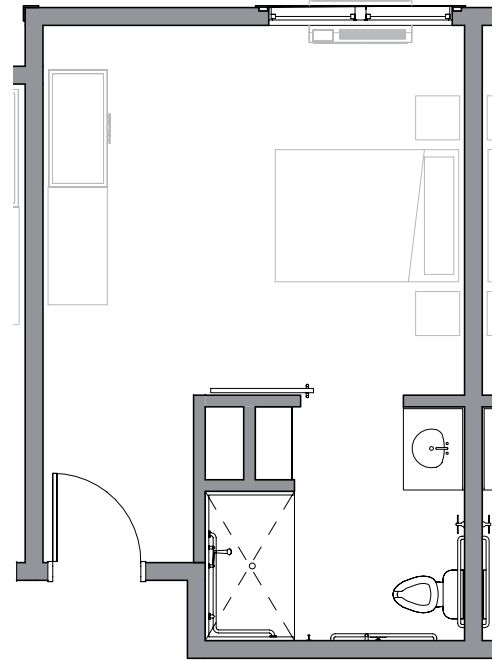
Our standard Memory Care Neighborhood plan includes all-inclusive care, medication management, meals and utilities (except phone), plus access to all amenities and services. An individual care plan will be determined for each resident prior to move-in.

## COMMUNITY LIVING DETAILS

**Community Entrance Fee**.....\$2,500  
One-time, non-refundable, per apartment

## ADDITIONAL CARE OPTIONS

**Non-preferred Pharmacy** ..... \$250/month  
**Personalized Incontinence Supplies** . \$200/month  
**Respite Care** ..... \$300/day (no minimum stay)



**Studio, 1 Bath**

